

# R̄. Miserere Domine populo tuo

H 412				
Mode	2090	Rom1	160r	
CAO	7159	Rom2	127r	
C				
H	R			L

Est 13, 15-17

R̄. II

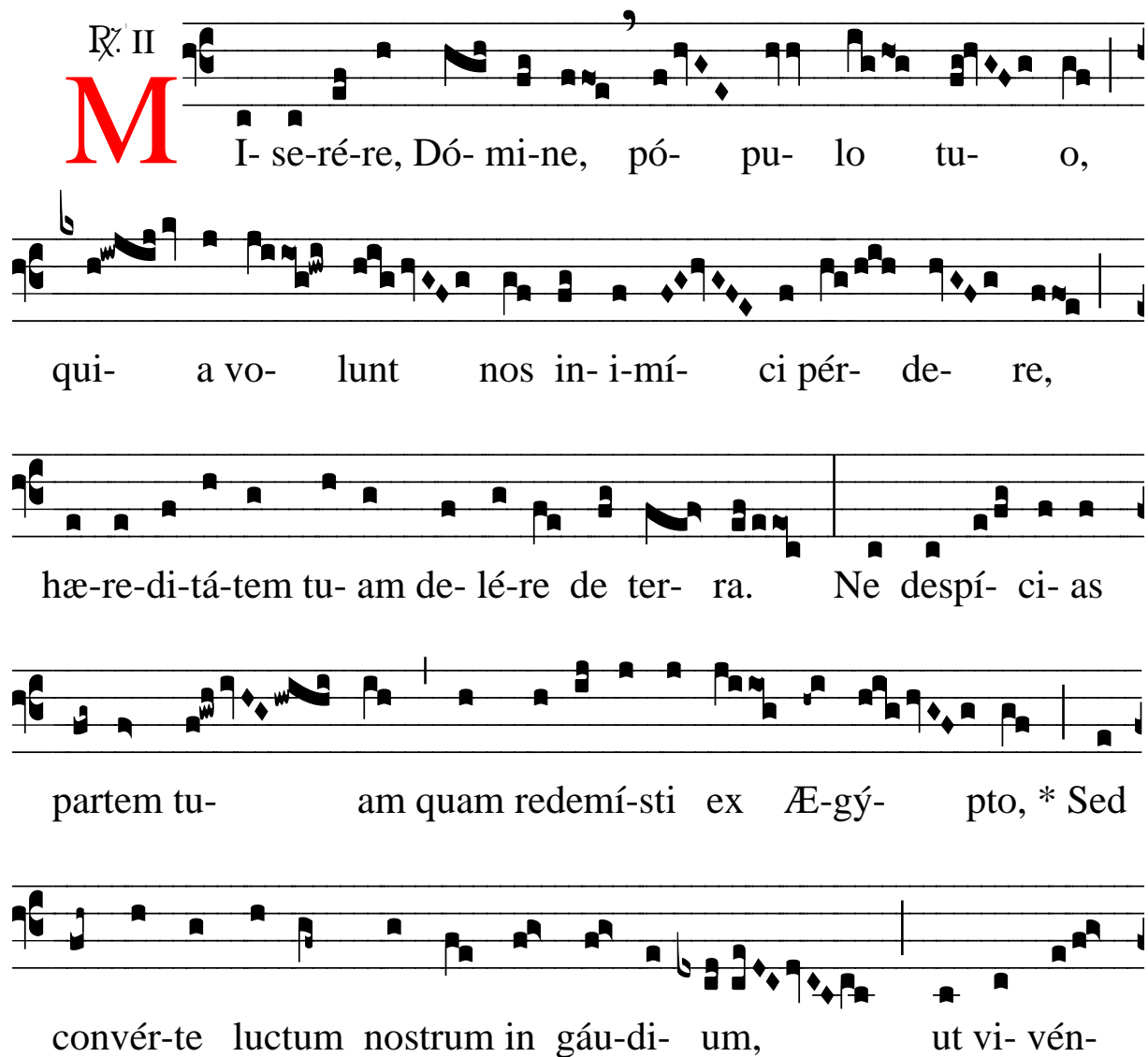
**M** I-se-ré-re, Dó-mi-ne, pó-pu-lo tu-o,

qui-a vo-lunt nos in-i-mí-ci pér-de-re,

hæ-re-di-tá-tem tu-am de-lé-re de ter-ra. Ne despí-ci-as

partem tu-am quam redemí-sti ex Æ-gý-pto, \* Sed

convér-te luctum nostrum in gáu-di-um, ut vi-vén-

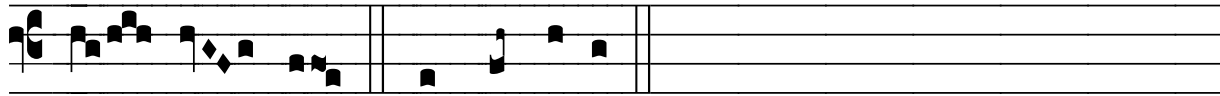




tes laudé- mus te, Dómi- ne. Ƿ. Da no- bis, Dómi-



ne, locum pæni- ténti- æ, et ne claudas o-ra canénti- um te,



Dó- mi- ne. \* Sed convérte.